

Features

- Programmable Precise Output Voltage from 2.5V to 36V
- Low Temperature Deviation: 5mV Typical
- Low Equivalent Full-range Temperature Coefficient
- Sink Current Capacity from 1mA to 100 mA
- Low Output Noise
- Wide Operating Range of -40 to 125°C
- ROHS/Halogen Free

Applications

- Charger
- Voltage Adapter
- Switching Power Supply
- Graphic Card
- Precision Voltage Reference

General Description

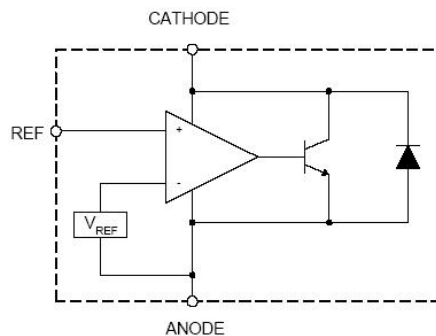
The AA431 is a three-terminal adjustable shunt regulator with guaranteed thermal stability over a full operation range. It features sharp turn-on characteristics low temperature coefficient and low output impedance, which make it ideal substitute for Zener diode in applications such as switching power supply, charger and other adjustable regulators.

The output voltage of AA431 can be set to any value between V_{ref} (2.495V) and the corresponding maximum cathode voltage (36V).

The AA431 precision reference is offered in two voltage tolerance: 0.5% and 1%.

This IC is available in 4 Packages: SOT-23 and TO92.

Block Diagram



PACKAGE/ORDERING INFORMATION (detailed)

MODEL	PACKAGE DESCRIPTION	ORDERING NUMBER	PACKING OPTION
AA431(1%)	SOT23	AA431AT0	Tape and Reel, 3000
AA431(1%)	TO92(BULK)	AA431BT0	Tape and Reel, 1000
AA431(0.25%)	SOT23	AA431AT2	Tape and Reel, 3000
AA431(0.5%)	SOT23	AA431AT1	Tape and Reel, 3000
AA431(0.5%)	TO92(BULK)	AA431BT3	Tape and Reel, 1000
AA431(0.4%)	SOT23	AA431AT3	Tape and Reel, 3000

Pin Assignment

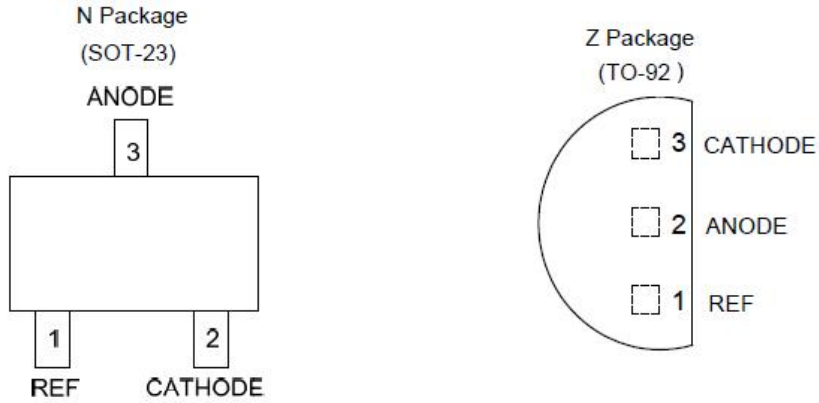


Figure 2. Pin Configuration of AA431

Absolute Maximum Ratings (Note 5)

Symbol	Parameter	Rating	Unit
V _{KA}	Cathode Voltage	40	V
I _{KA}	Cathode Current Range (Continuous)	-100 to 150	mA
I _{REF}	Reference Input Current Range	10	mA
P _D	Power Dissipation	Z, R Package	770
		N, K Package	370
T _J	Junction Temperature	+150	°C
T _{STG}	Storage Temperature Range	-65 to +150	°C
ESD	ESD (Human Body Model)	2000	V

Note 5: Stresses greater than those listed under "Absolute Maximum Ratings" may cause permanent damage to the device. These are stress ratings only, and functional operation of the device at these or any other conditions beyond those indicated under "Recommended Operating Conditions" is not implied. Exposure to "Absolute Maximum Ratings" for extended periods may affect device reliability.

Recommended Operating Conditions

Symbol	Parameter	Min	Max	Unit
V _{KA}	Cathode Voltage	V _{REF}	36	V
I _{KA}	Cathode Current	1.0	100	mA
T _A	Operating Ambient Temperature Range	-40	+125	°C

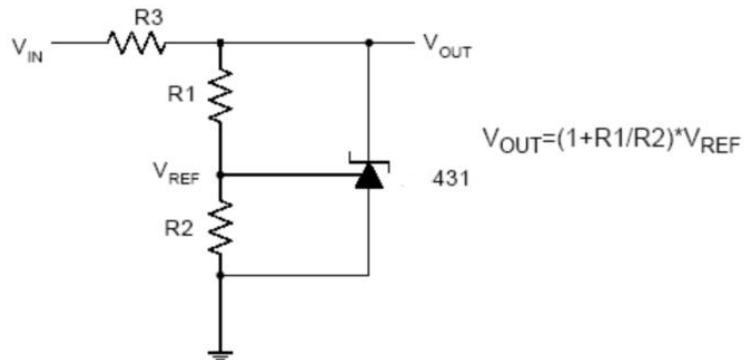


AA431 Adjustable Precision Shunt Regulations

Electrical Characteristics (Operating Conditions: $T_A = +25^\circ\text{C}$, unless otherwise specified.)

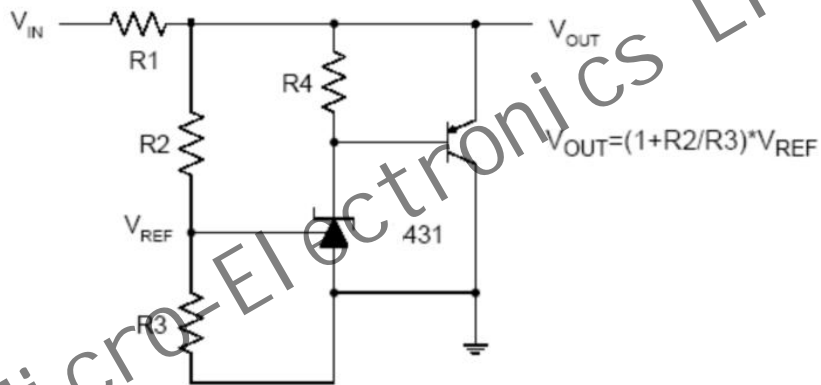
Symbol	Parameter	Test Circuit	Conditions	Min	Typ	Max	Unit	
V _{REF}	Reference Voltage	4	V _{KA} = V _{REF} , I _{KA} = 10mA	2.483	2.495	2.507	V	
				2.470	2.495	2.520		
ΔV _{REF}	Deviation of Reference Voltage Over Full Temperature Range	4	V _{KA} = V _{REF} , I _{KA} = 10mA	0 to +70°C	–	5	20	mV
				–40 to +85°C	–	5	26	
				–40 to +125°C	–	5	40	
$\frac{\Delta V_{REF}}{\Delta V_{KA}}$	Ratio of Change in Reference Voltage to the Change in Cathode Voltage	5	I _{KA} = 10mA	ΔV _{KA} = 10V to V _{REF}	–	–1.0	–2.7	mV/V
				ΔV _{KA} = 36V to 10V	–	–0.5	2.0	
I _{REF}	Reference Current	5	I _{KA} = 10mA, R ₁ = 10KΩ, R ₂ = ∞	–	0.7	4	μA	
ΔI _{REF}	Deviation of Reference Current Over Full Temperature Range	5	I _{KA} = 10mA, R ₁ = 10KΩ, R ₂ = ∞ T _A = –40 to +125°C	–	0.4	1.2	μA	
I _{KA} (Min)	Minimum Cathode Current for Regulation	4	V _{KA} = V _{REF}	–	0.4	1.0	mA	
I _{KA} (Off)	Off-state Cathode Current	6	V _{KA} = 36V, V _{REF} = 0	–	0.5	1.0	μA	
Z _{KA}	Dynamic Impedance	4	V _{KA} = V _{REF} , I _{KA} = 1 to 100mA, f ≤ 1.0KHz	–	0.2	0.5	Ω	
θ _{JC}	Thermal Resistance	–	SOT-23	–	135.9	–	°C/W	
			TO-92	–	81.9	–		

Typical Applications Circuit



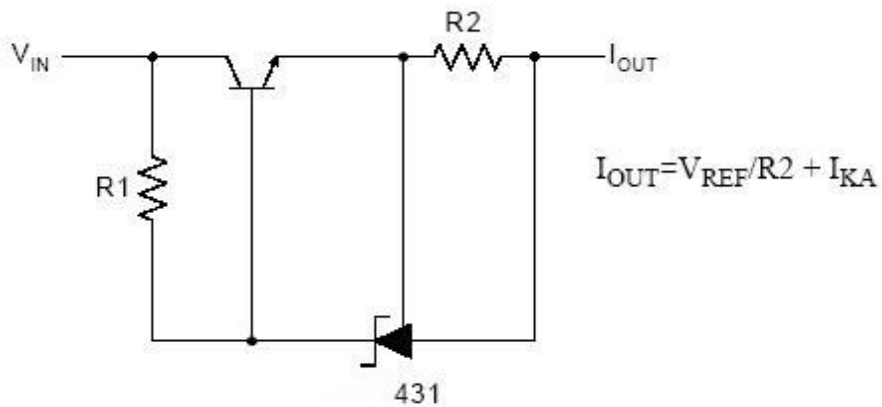
$$V_{OUT} = (1 + R1/R2) \cdot V_{REF}$$

Shunt Regulator



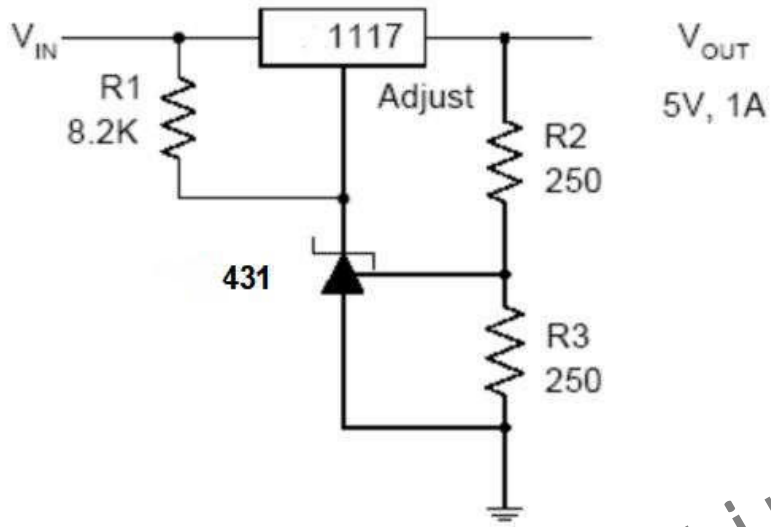
$$V_{OUT} = (1 + R2/R3) \cdot V_{REF}$$

High Current Shunt Regulator

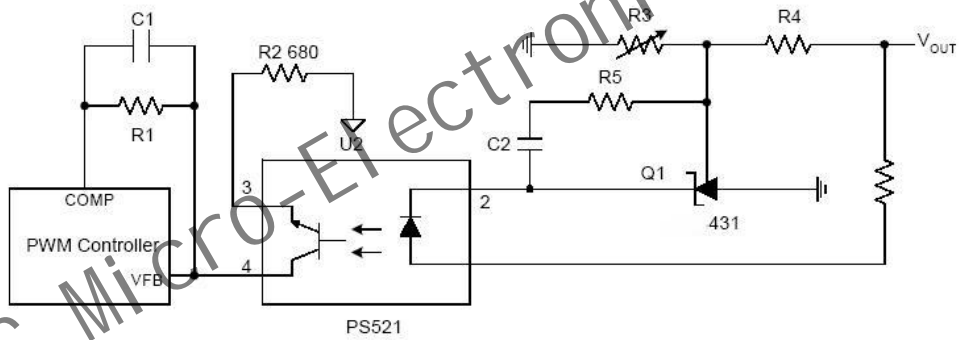


$$I_{OUT} = V_{REF}/R2 + I_{KA}$$

Current Source or Current Limit

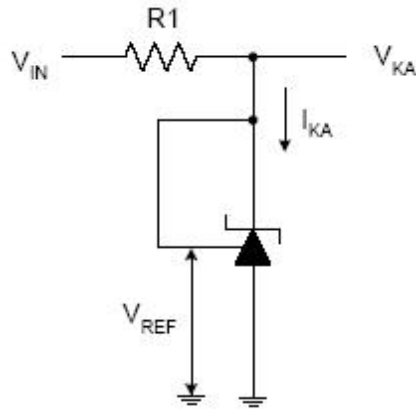


Precision 5V 1A Regulator

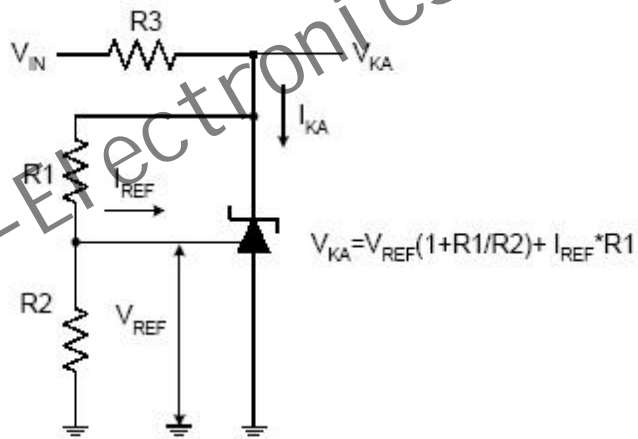


PWM Converter with Reference

Electrical Characteristics (Cont.)

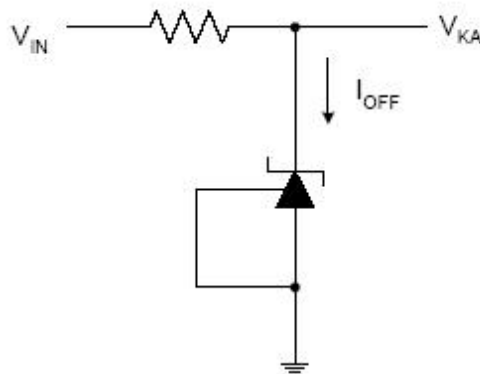


Test Circuit 4 for $V_{KA} = V_{REF}$



$$V_{KA} = V_{REF} \left(1 + \frac{R1}{R2} \right) + I_{REF} \cdot R1$$

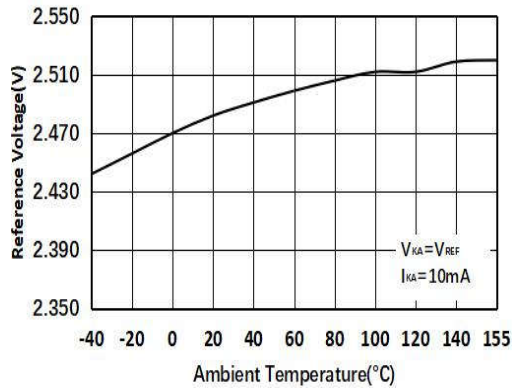
Test Circuit 5 for $V_{KA} > V_{REF}$



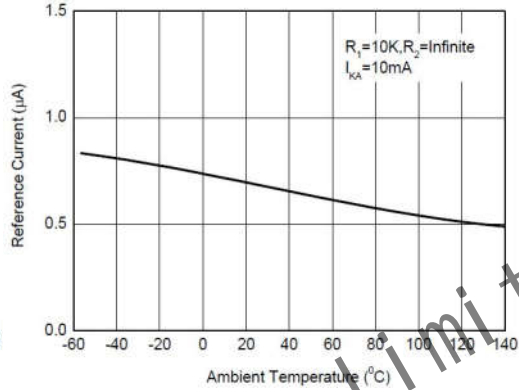
Test Circuit 6 for I_{OFF}

Performance Characteristics

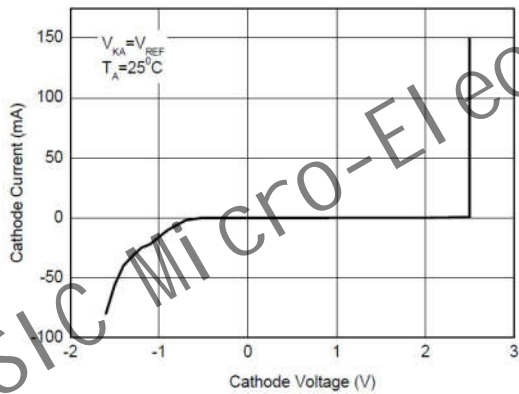
Reference Voltage vs.ambient temperature



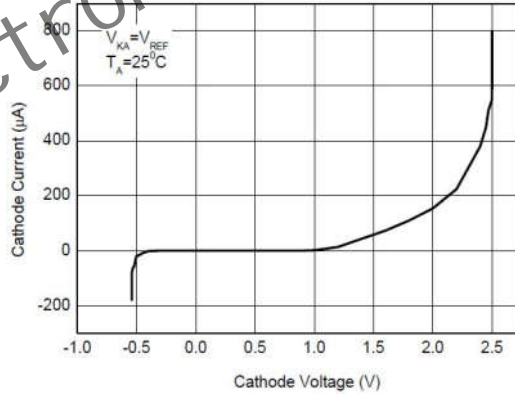
Reference Current vs. Ambient Temperature



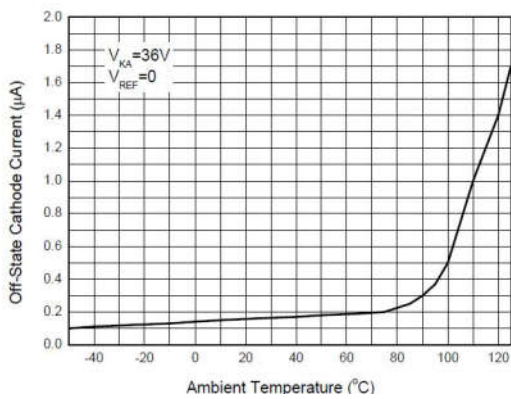
Cathode Current vs. Cathode Voltage



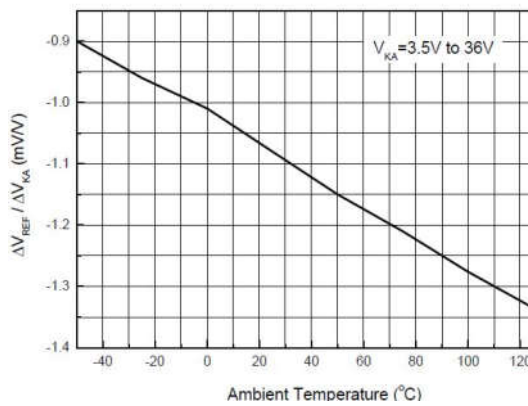
Cathode Current vs. Cathode Voltage



Off-State Cathode Current vs. Ambient Temperature

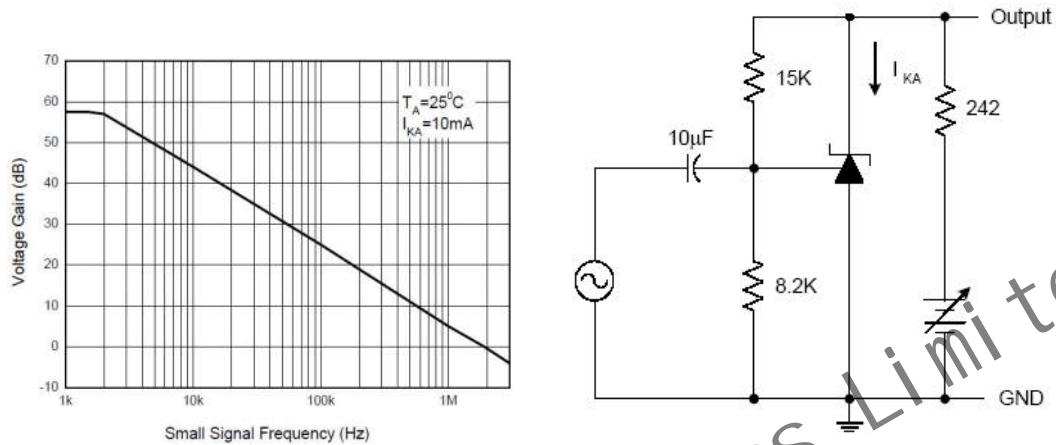


Ratio of Delta Reference Voltage to the Ratio of Delta Cathode Voltage

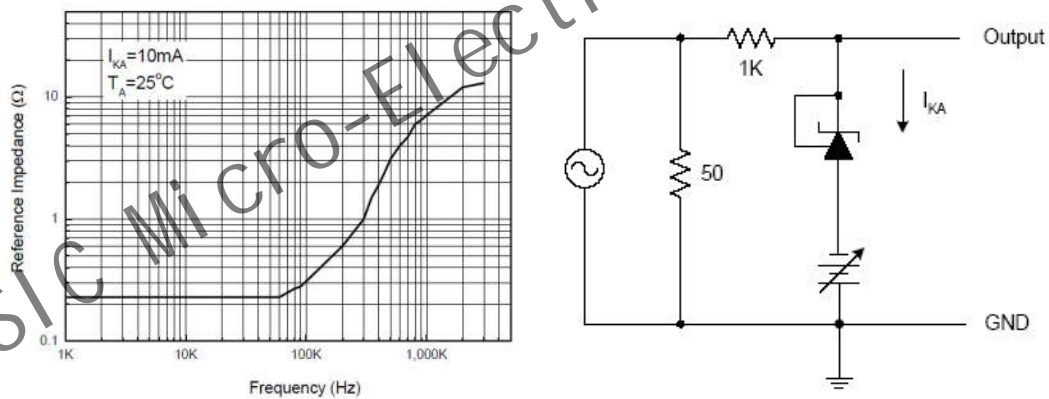


Performance Characteristics (Cont.)

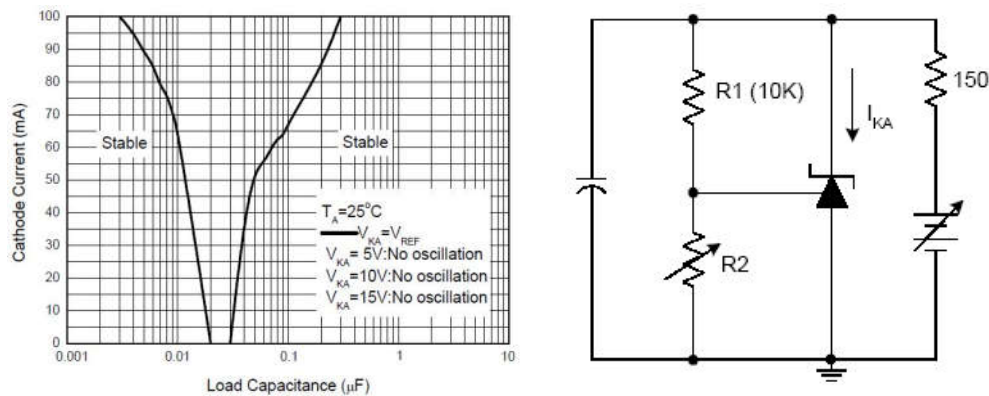
Small Signal Voltage Gain vs. Frequency



Reference Impedance vs. Frequency

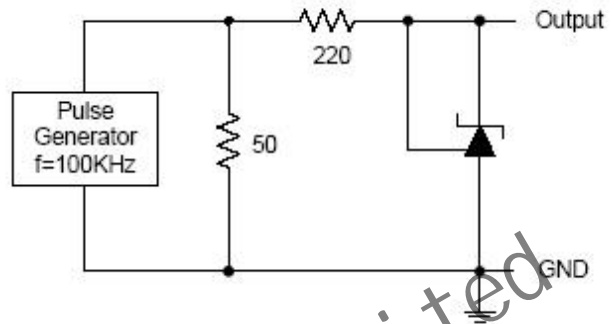
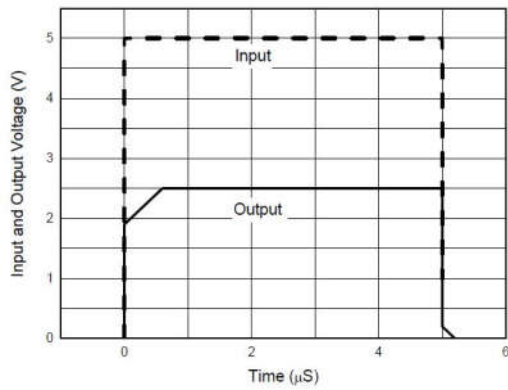


Stability Boundary Conditions vs. Load Capacitance



Performance Characteristics (Cont.)

Pulse Response of Input and Output Voltage



ASIC Micro-Electronics Limited



AA431 Adjustable Precision Shunt Regulations

© Asic Micro-Electronics Limited

ASIC cannot assume responsibility for use of any circuitry other than circuitry entirely embodied in a ASIC product. No circuit patent license, copyrights or other intellectual property rights are implied.

ASIC reserves the right to make changes to their products or specifications without notice. Customers are advised to obtain the latest version of relevant information to verify, before placing orders, that information being relied on is current and complete.

ASIC Micro-Electronics Limited